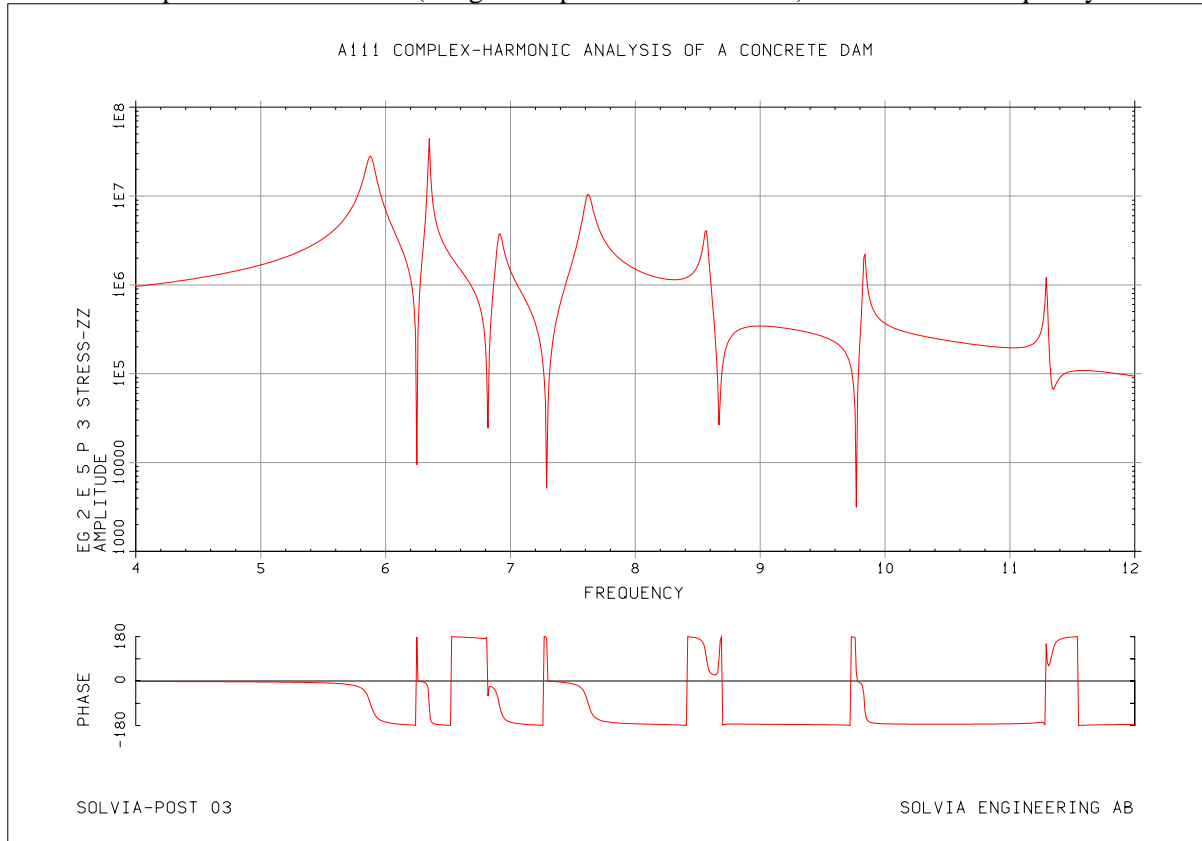
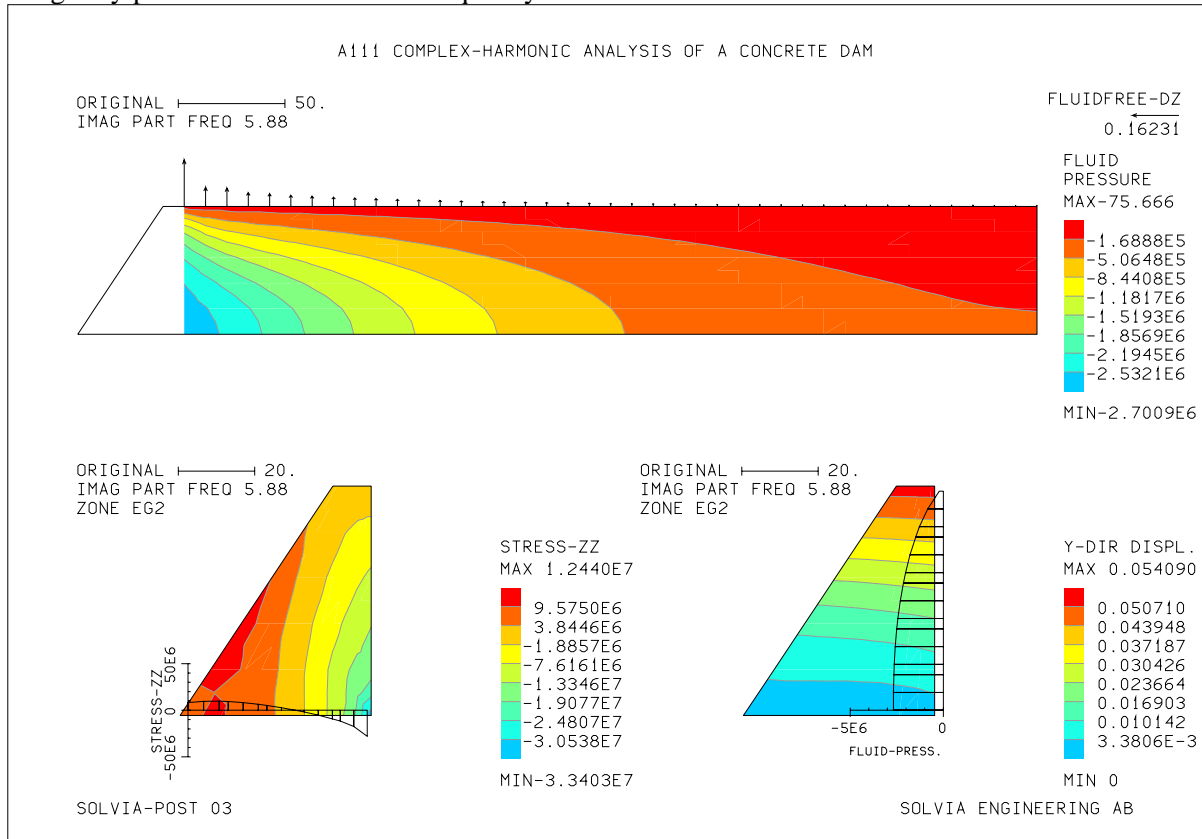




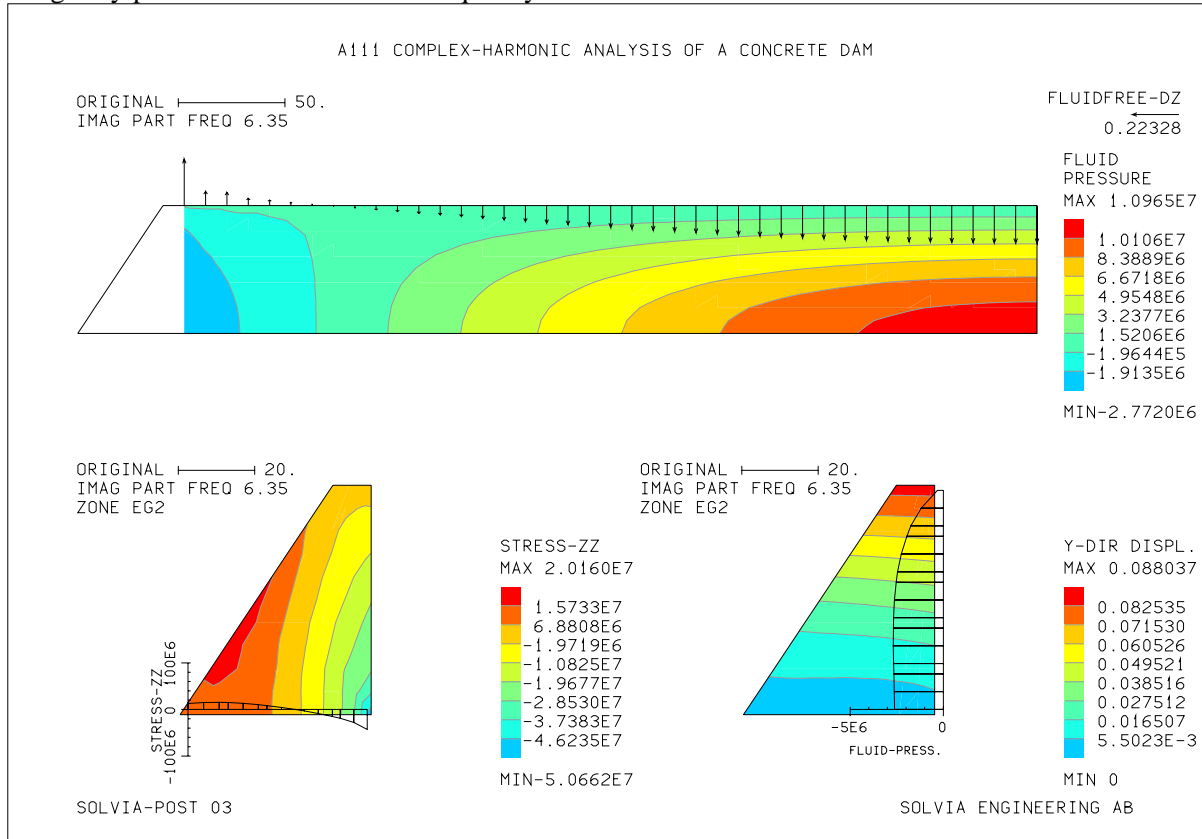
Stress-ZZ response at dam bottom (integration point nearest node 1) as function of frequency.



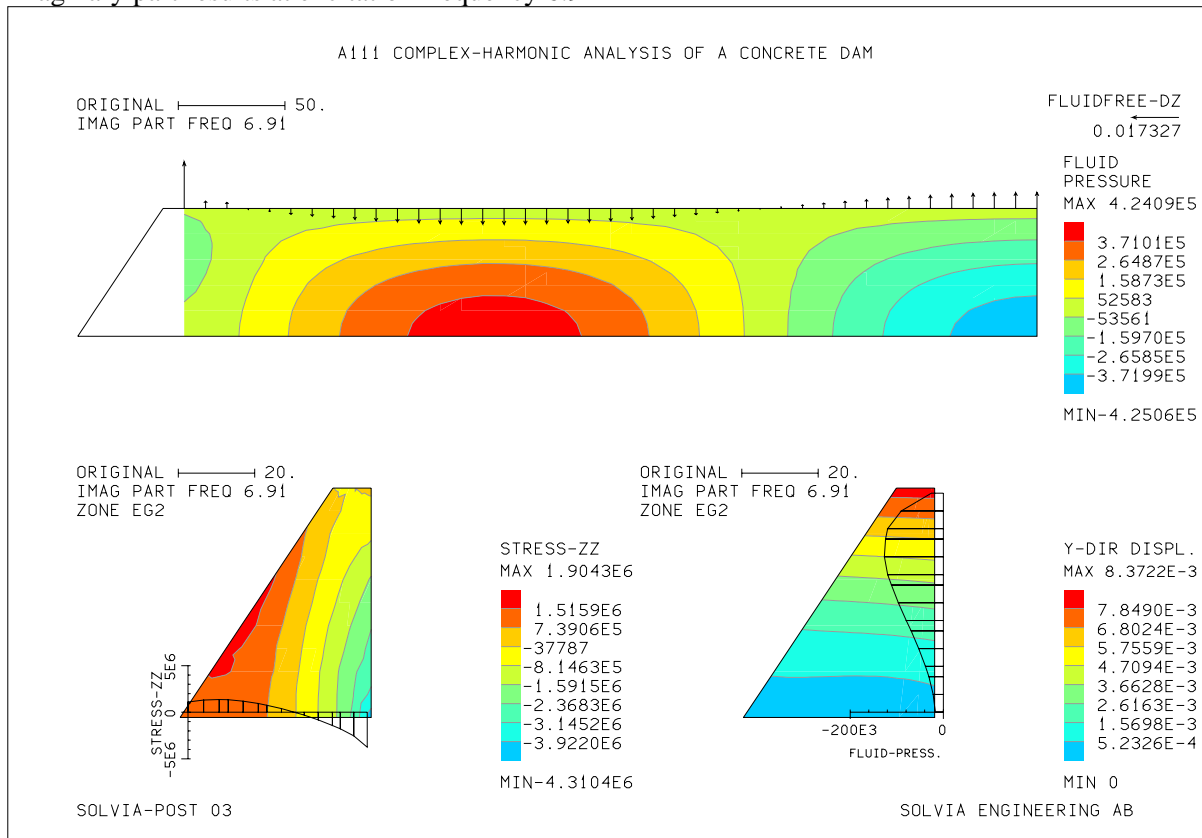
Imaginary part results at excitation frequency 5.88 Hz.



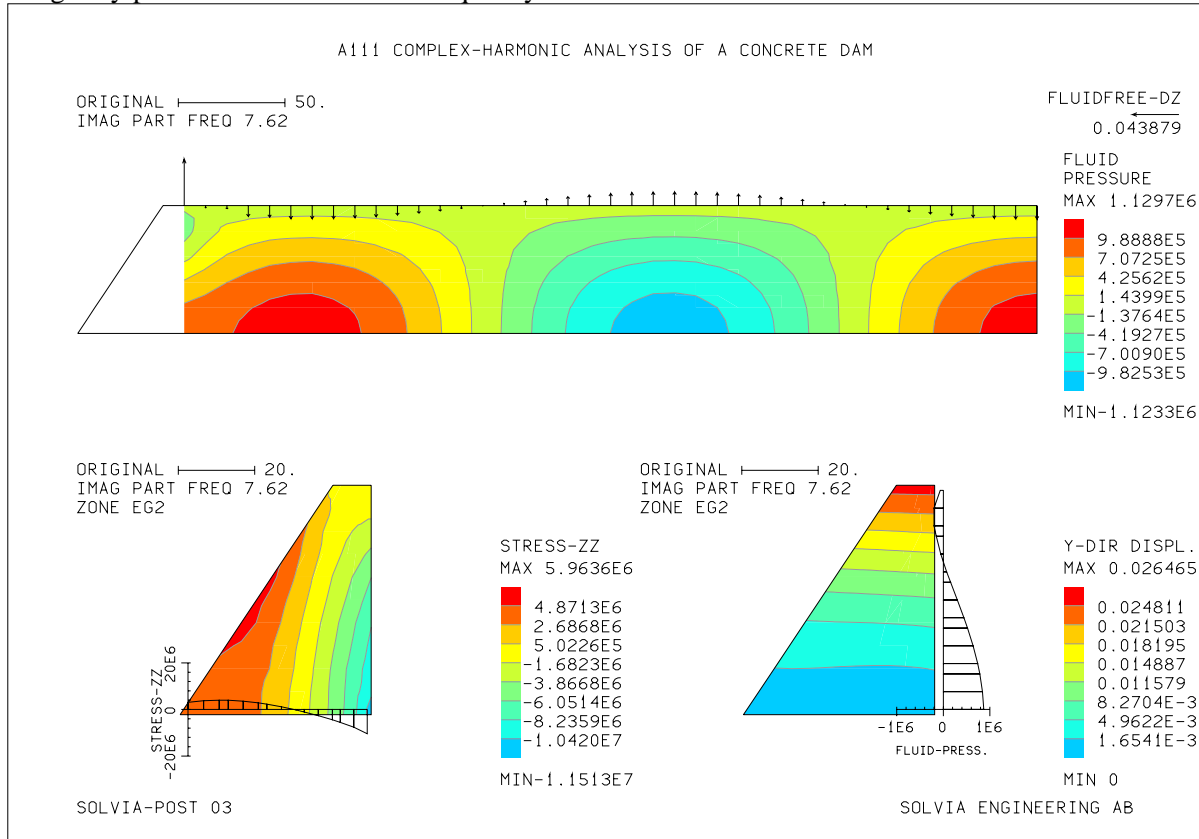
Imaginary part results at excitation frequency 6.35 Hz.



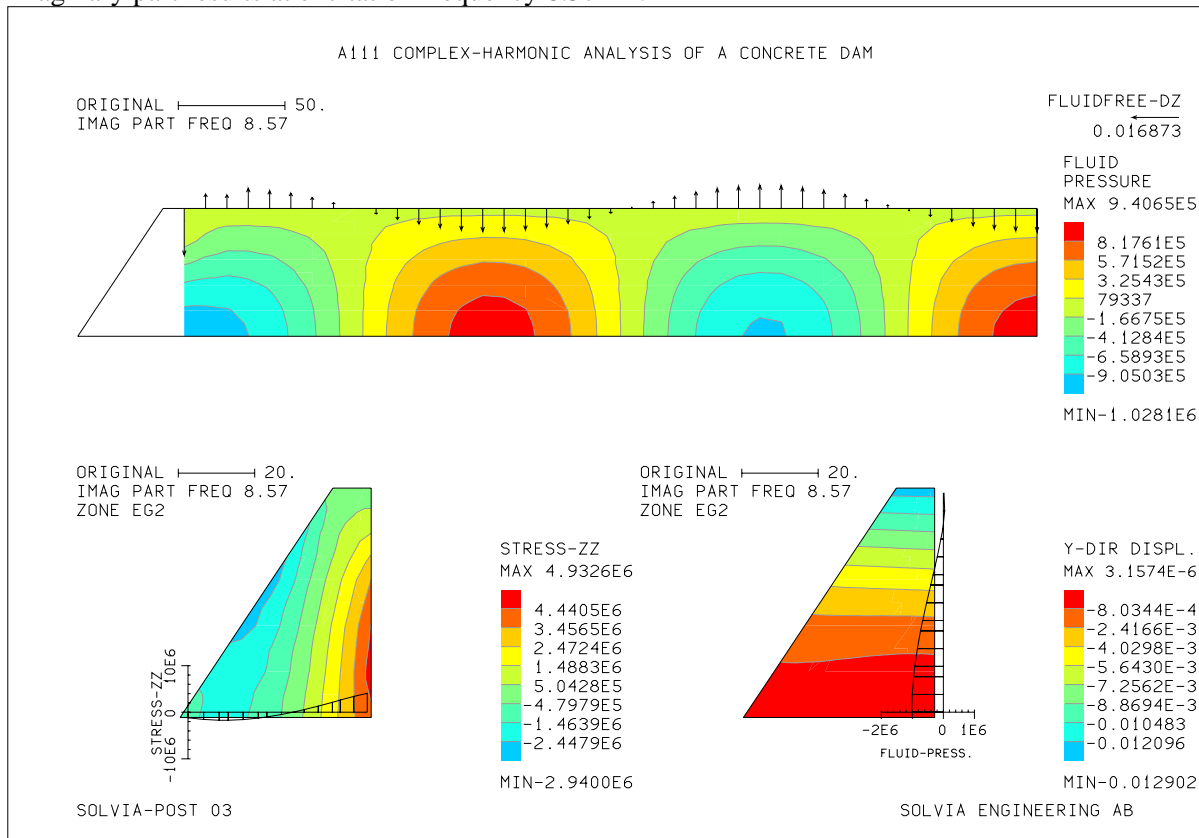
Imaginary part results at excitation frequency 6.91 Hz



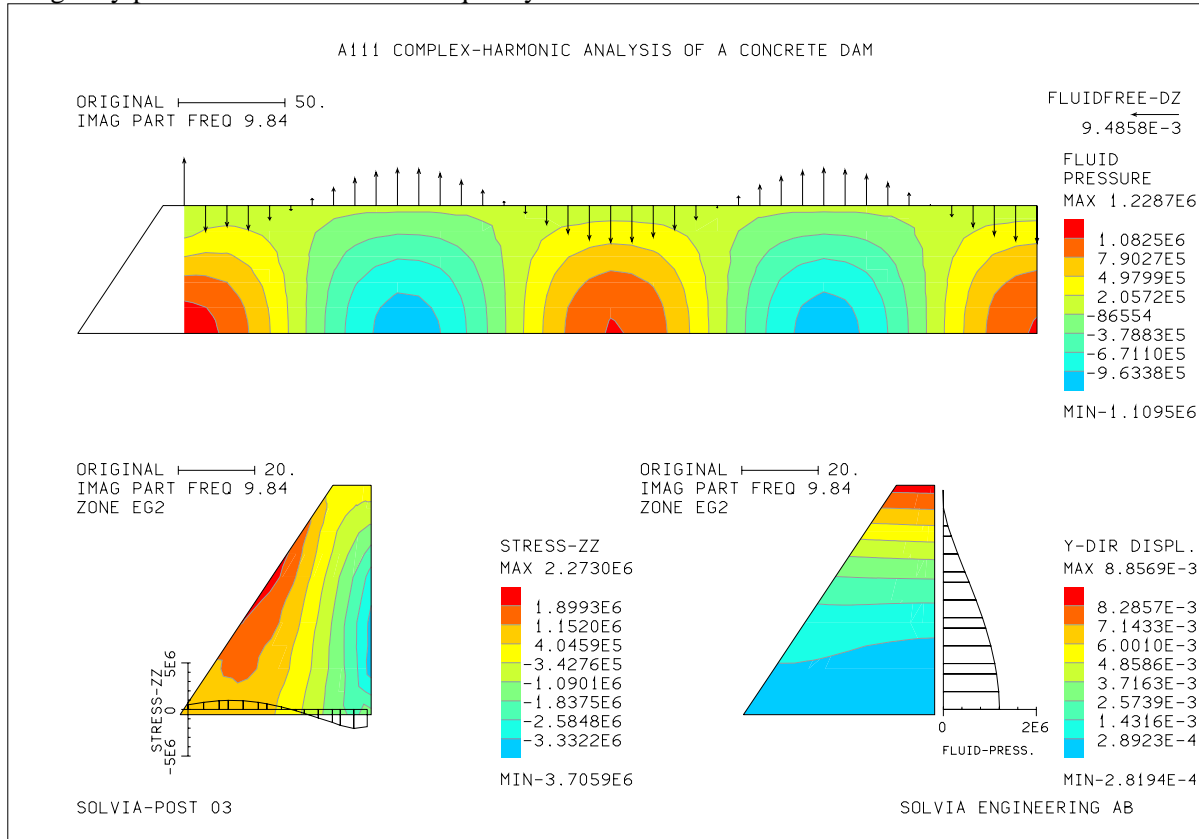
Imaginary part results at excitation frequency 7.62 Hz.



Imaginary part results at excitation frequency 8.57 Hz.



Imaginary part results at excitation frequency 9.84 Hz.



Imaginary part results at excitation frequency 11.29 Hz.

